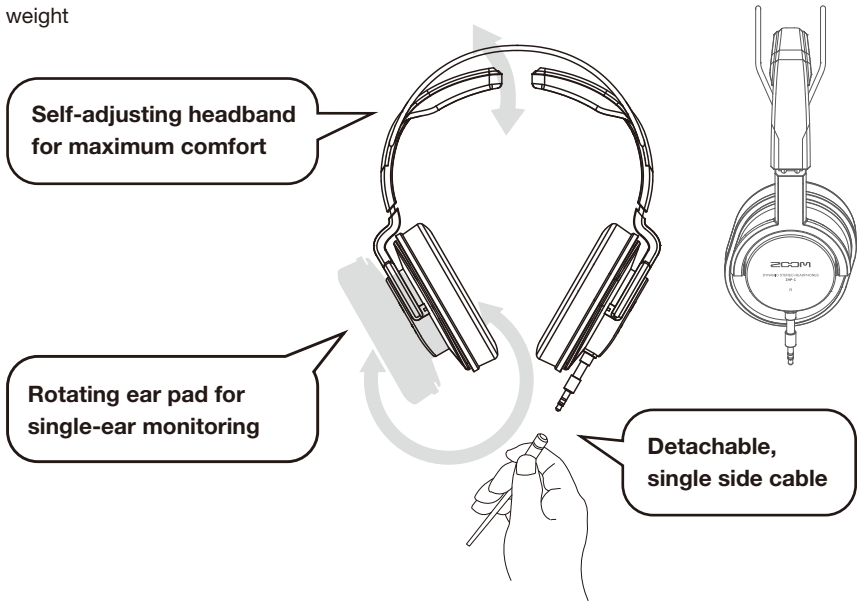


ZHP-1 ZOOM DYNAMIC STEREO HEADPHONES

Features

- Dynamic, closed-back headphones
- High noise attenuation
- Ø40 mm high resolution drivers
- Self-adjusting headband for great fit and comfort
- Rotating ear pad for convenient single-ear monitoring
- Detachable, single side cable
- Light weight



Furnished Accessories



3M straight cable



Plug adapter

Specifications

Acoustic Design: Dynamic, closed-back | Driver: Ø40 mm, neodymium | Sensitivity: 97 +/- 1.5 dB (1 mW) at 1 kHz | Frequency Response: 10 – 20,000 Hz | Maximum Input Power: 200 mW | Rated Impedance: 68 Ω @ 1 kHz | Earpad: Leatherette | Head Band Pressure: Approx. 4.5 N | Cable: 3-meter (9.9 ft.) | straight cable, single-sided | Connector: Stereo mini jack | Net Weight: 220 g (7.76 oz)

ZOOM CORPORATION 4-4-3 Kanda-surugadai, Chiyoda-ku, Tokyo 101-0062 Japan zoomcorp.com

© 2020 ZOOM CORPORATION Copying or reprinting this manual in part or in whole without permission is prohibited. Product names, registered trademarks and company names in this document are the property of their respective companies. All trademarks and registered trademarks in this document are for identification purposes only and are not intended to infringe on the copyrights of their respective owners.