

**ZOOM**<sup>®</sup>  
CATCH US IF YOU CAN

## ***ZOOM Power Drive PD-01***

*Operation Manual*

### **INDEX**

|                           |    |
|---------------------------|----|
| Features                  | 2  |
| Parts and Functions       | 4  |
| Connections               | 6  |
| Sound Samples             | 8  |
| PD-01 and Compact Effects | 10 |
| PD-01 and Multi-Effects   | 11 |
| Troubleshooting           | 12 |
| Specifications            | 14 |
| Usage Precautions         | 15 |
| Safety Precautions        | 16 |

# Features

- **The Zoom Power Drive PD-01 is a dedicated overdrive unit with the following features.**
  
- **Unprecedented warm and full overdrive**  
A specially developed analog circuit provides totally unmuffled, natural-sounding distortion without any trace of stickiness or hollowness. This results in natural-sounding distortion which fully brings out picking nuances. Inherent noise is also kept very low.
  
- **Use as full-fledged booster**  
With the GAIN control set to zero, the PD-01 gives superb clean sound. The output stage can deliver up to 20 Vp-p, which drive the amplifier to overdrive with fat, full-bodied sound.
  
- **Mechanical switch for on/off and true bypass**  
On/off switching is performed using a mechanical foot switch. In the bypass position, the guitar signal is passed through without any alteration.

---

- **HIGH/LOW equalizer provides versatility**

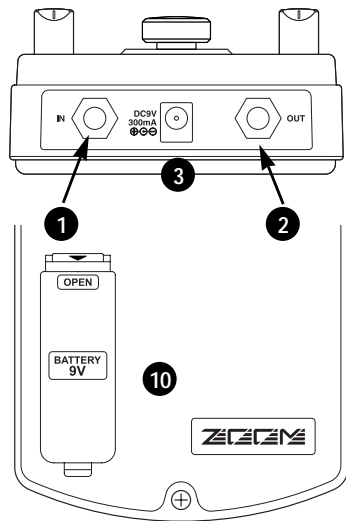
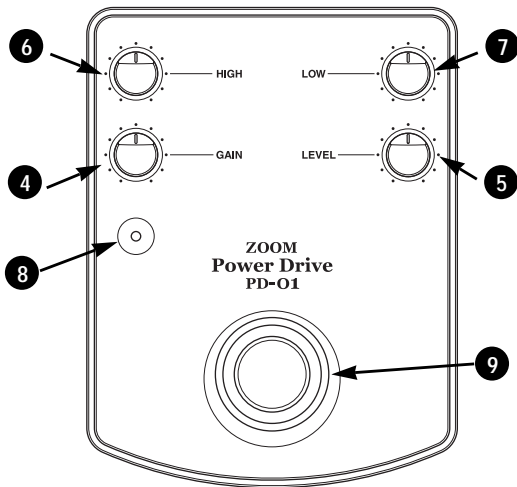
The PD-01 features separate HIGH and LOW controls. This gives you more flexibility in creating your own sound with options, ranging from a mild drive tone to a sharp, bright distortions.

- **Sturdy metal chassis**

The rock-solid case made of aluminum not only looks good, it also can withstand the rigors of use on stage. It's low profile provides excellent stability.

# Parts and Functions

- This section explains the various parts of the PD-01.

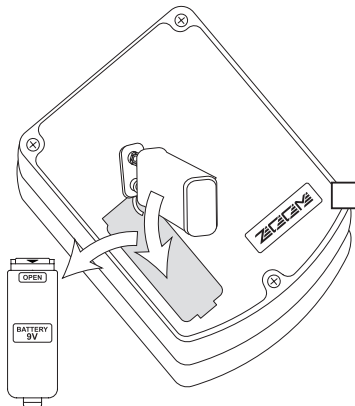


- 
- 1** IN jack  
The input of the unit acts as a power switch. When you connect the plug of the cable from the guitar here, the unit is turned on.
  - 2** OUT jack  
This is the output of the unit. Connect the plug of the cable going to the guitar amplifier or other effect device here.
  - 3** AC adapter jack  
When powering the unit from the AC adapter, insert the plug from the adapter into this jack. Be sure to use only an AC adapter rated for 9 V DC, center negative, 300 mA (Zoom AD-0006). When the AC adapter is connected, the PD-01 will always be ON, regardless of whether a cable is plugged into the IN jack.
  - 4** GAIN control  
Turning this control clockwise increases the drive effect. In the zero position, there is no distortion.
  - 5** LEVEL control  
This control adjusts the output signal level. Turning the control clockwise increases the level.
  - 6** HIGH control  
This control adjusts the high frequency range.
  - 7** LOW control  
This control adjusts the low frequency range.
  - 8** Indicator  
Illuminates when the PD-01 is active.
  - 9** Foot switch  
Switches the PD-01 effect on and off.
  - 10** Battery compartment  
A 9V battery (6F22) can be inserted here.

# Connections

## ● How to connect the PD-01.

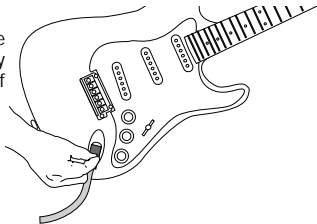
1. Open cover of battery compartment and insert battery



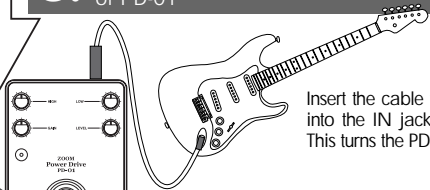
Take care to snap the battery to the connector with correct polarity.

2. Turn amplifier off and connect cable to guitar

Make sure that the plug is inserted fully into the OUT jack of the guitar.

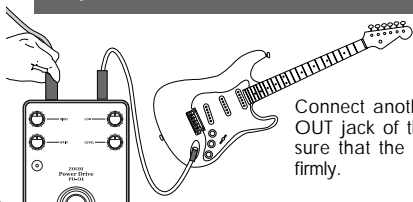


3. Plug cable from guitar into IN jack of PD-01

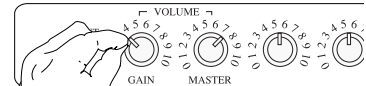


Insert the cable from the guitar into the IN jack of the PD-01. This turns the PD-01 on.

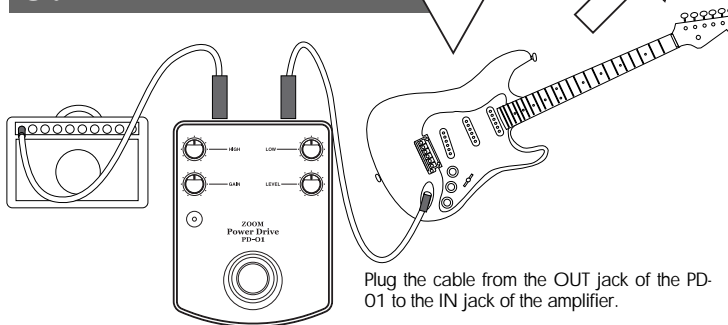
#### 4. Connect cable to OUT jack of PD-01



#### 6. Raise volume



#### 5. Connect output cable to amplifier

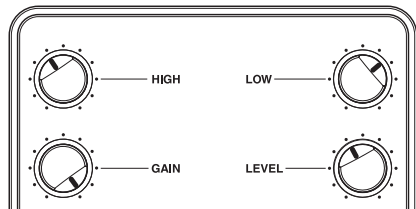


Always follow the above sequence.

If steps are performed in reverse order, there is a danger of damage to the amplifier or speakers.

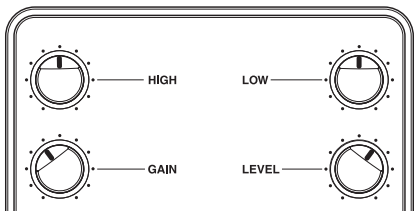
# Sound Samples

- This section shows some actual setting examples and gives information on amplifier settings.



## ★ Standard overdrive sound

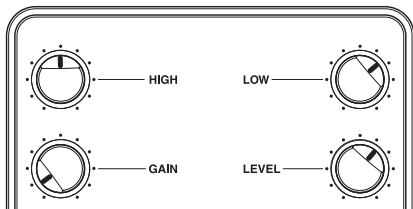
Set the amplifier to clean sound without distortion. This will allow you to easily switch between clean sound and overdrive. In this example, the GAIN is set fairly high and the LOW range is given a boost, resulting in a mild, warm sound. This is suitable for applications ranging from light rock backing to solo play.



## ★ Boost sound emphasizing amp distortion

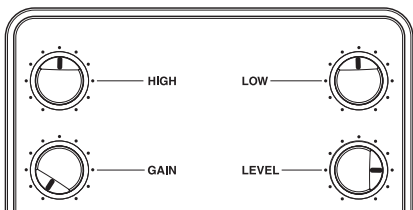
These settings emphasize the amplifier distortion. The key is the 10 o'clock position of the GAIN control. The HIGH and LOW controls may be left in the center. LEVEL can be adjusted to fit the amplifier distortion. The sound of this widely applicable setup will differ considerably, depending on the volume level setting at the guitar.





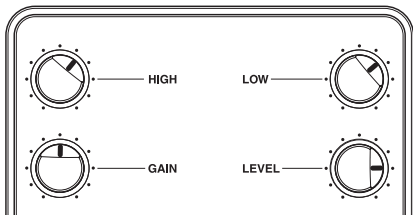
### ★ Clean sound with a fat character

When the clean tone of the amplifier lacks a bit of body, the PD-01 can provide improvement with very moderate settings. The GAIN setting is the key. When set to a point where distortion is barely noticeable, the sound will have more body and punch. Unlike with conventional overdrive effects, you can create a sharp, fat sound.



### ★ Booster sample 1: clean & crunch

This is a special way to use the PD-01. Set GAIN to zero and raise the level to get great booster performance. Set the amplifier to clean tone for backing, and then set the PD-01 to ON to obtain a natural crunch sound produced by the amplifier in conjunction with the PD-01.

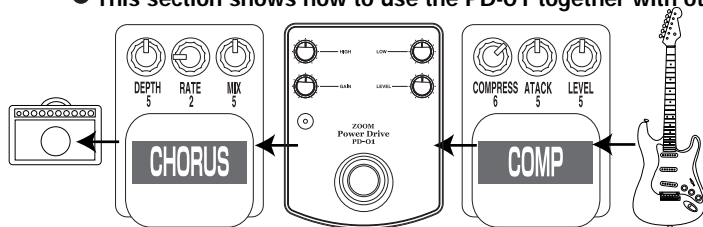


### ★ Booster sample 2: drive & distortion

Set up the amplifier to create a drive sound for backing, and activate the PD-01 for playing solos. The PD-01 is great for this technique, which is often used with large stack amps in the British style. Thanks to the booster function, you'll get incredibly distinct distortion sound.

# PD-01 and Compact Effects

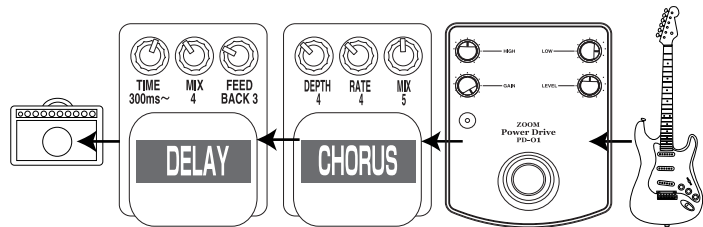
- This section shows how to use the PD-01 together with other compact effect devices.



## ★ With compressor & chorus

In this example, a compressor is inserted before the PD-01 for level-equalized overdrive sound. Activating the chorus yields a sound that is optimally matched to light chord work.

PD-01 SETTING : GAIN 5 HIGH 5 LOW 5



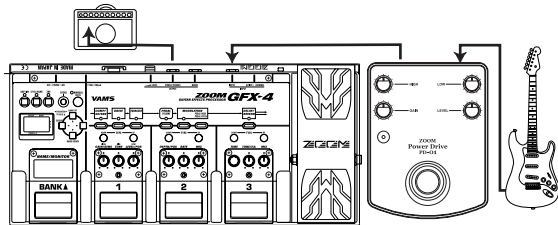
## ★ With chorus & delay

In this setup, the PD-01 GAIN control is turned up fully. Connect the chorus and delay after the PD-01, for extended solos. Chorus can be set as desired, but the delay should be matched to the tempo of the song. By choosing a fairly long delay time, you can create a wide, expansive sound.

PD-01 SETTING : GAIN 10 HIGH 5 LOW 8

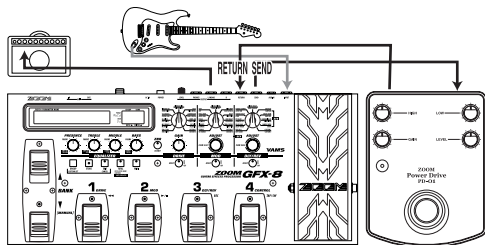
# PD-01 and Multi-Effects

- This section shows how to use the PD-01 together with multi-effect devices such as the GFX-4.



## ★ Creating drive sound with PD-01 only

When using a multi-effect device with the PD-01, the PD-01 should be connected before the other device. For distortion sound, create the distortion with the PD-01 only.



## ★ Using send/return loop of multi-effect

When using a multi-effect device such as the GFX-8 with send/return jacks, the PD-01 can be used as if it were a part of the other device. You can switch the PD-01 on and off using patch programs of the multi-effect.

# Troubleshooting

● If there seems to be a problem with the unit, check the following points first.

★ No sound.

- ◆ Are connections to the IN and OUT jacks reversed? Check the connections.
- ◆ Is a battery inserted? If there is no battery in the unit and the AC adapter is not used, there will be no sound. Insert a fresh battery, or connect the AC adapter.
- ◆ Is the guitar or amplifier volume or the LEVEL control of the PD-01 turned down? Raise the volume.
- ◆ Are there any problems with other effect devices or with cables? Use a known good cable and connect the PD-01 directly to the amplifier.

★ Sound level is low, and sound is distorted also in bypass mode.

- ◆ Is the battery exhausted? Insert a fresh battery.

★ Noise is heard.

- ◆ Are several distortion effects used in series? Excessive compressor settings can also result in noise. Turn only the currently used devices on.
- ◆ Is the cable of good quality? Low-quality cables can cause noise.
- ◆ Is the unit used in the vicinity of a computer monitor, refrigerator, fluorescent lamp, motor, or similar device? The guitar or cable can pick up noise from such devices. In case of problems, increase the distance to such devices.

---

## ★ Battery gets used up very quickly.

- ◆ Power to the PD-01 gets turned on when a plug is inserted in the IN jack. In this condition, current is drawn from the battery regardless of whether the effect is switched on or off. When not using the unit, be sure to disconnect the plug from the IN jack. Also, the use of alkaline battery rather than manganese is recommended. Connecting the AC adapter (ZOOM AD-0006) allows extended use without having to worry about the battery. When using several effect devices, powering them from AC adapters is recommended. \*The initially supplied battery is for checking only and may have a short service life.

## ★ Distortion is not strong enough. Sound is not clear.

- ◆ Turn up the position of the GAIN control and of the HIGH/LOW controls. Also don't forget to fully turn up the level and tone controls of the guitar.
- ◆ When using an effect device between the PD-01 and the guitar, check the battery, volume, and cable of that device.

## ★ Cannot produce the desired sound.

- ◆ The audible result of using the PD-01 depends on various different factors. Hardware such as effect devices, guitar, and amplifier of course must be considered, but play technique aspects such as picking and fingering are also important. When creating your sound, do not set controls initially to the 0 or 10 position. Start with all controls set to center and perform fine adjustment from there.

# Specifications

- Controls
  - Foot switch
  - GAIN control
  - LEVEL control
  - HIGH control
  - LOW control
- Input
  - Standard monaural phone jack
  - Rated input impedance: 470 kilohms
  - Rated input level: -20 dBm
- Output
  - Standard monaural phone jack
  - Rated output impedance: 10 kilohms or more
  - Rated output level: +19 dBm
- Power requirements
  - Battery (6F22, 9V) or AC adapter AD-0006 (9 V DC, 300 mA, center minus)
- Battery life
  - Continuous operation: approx. 15hours (alkaline) or 5hours (manganese)
- External Dimensions
  - 98 (W) x 127 (D) x 48 (H) mm
- Weight
  - 710 g (including battery)
- Supplied accessories
  - Instruction manual
  - Battery (6F22, 9V)

\*0 dBm = 0.775 Vrms

\*Design and specifications subject to change without notice.

# Usage Precautions

- Electrical interference

The PD-01 has been designed to minimize emission of electromagnetic radiation from inside the device, and to minimize susceptibility to external interference.

However, equipment that is very susceptible to interference or that emits powerful electromagnetic radiation should not be placed near the PD-01, as the possibility of interference cannot be ruled out entirely.

If such problems occur, move the PD-01 further away from the affected equipment.

- Cleaning

Use a soft, dry cloth to clean the PD-01. If necessary, slightly moisten the cloth. Do not use abrasive cleanser, wax, or solvents (such as paint thinner or cleaning alcohol), since these may dull the finish or damage the surface.

Please keep this manual at hand for future reference.

# Safety Precautions

In this manual, important information that is intended to prevent the danger of injury to persons and damage to equipment is marked with special symbols. The meaning of these symbols is explained below.



Warning

Disregarding instructions printed here incurs the risk of death or severe injury to persons.



Caution

Disregarding instructions printed here incurs the risk of injury to persons and/or damage to peripheral equipment.

Please observe the following safety tips and precautions to ensure hazard-free use of the PD-01.

## About power



Warning

Using an AC adapter to power this unit is recommended. When powering the unit from a battery, an alkaline battery should be used.

### AC adapter operation

- Use only an AC adapter rated for 9 V DC, 300 mA, center minus (Zoom AD-0006). Using the unit with a different adapter poses a risk of fire and electric shock.
- Connect the AC adapter only to an AC outlet that supplies the rated voltage required by the adapter.
- When disconnecting the AC adapter from the AC outlet, always grasp the adapter itself.
- Disconnect the AC adapter when not using the unit for an extended time.

### Battery operation

- Use a generic 9V dry battery (6F22) (alkaline or manganese).
- The PD-01 is not designed to charge batteries. Observe the precautions on the battery.
- Remove the battery when not using the unit for an extended time.
- If battery leakage has occurred, wipe the battery compartment and the battery terminals carefully to remove all remnants of battery fluid.
- While using the unit, the battery compartment cover should be closed.

## Usage environment



Caution

Avoid using the PD-01 in environments where it will be exposed to:

- Temperature extremes
- High humidity or moisture
- Excessive dust or sand
- Excessive vibration or shock

## Handling



Caution

The PD-01 is a precision instrument. Except for the foot switch, do not push other parts with your feet or subject them to strong force.

- Take care that no foreign objects (coins or pins etc.) or liquids can enter the unit.
- Be sure to turn the power to all equipment off before making connections.
- Before moving the unit, turn the power off, disconnect all cables and the AC adapter.

## Alterations



Caution

- Never open the case of the PD-01 or attempt to modify the product in any way since this can result in damage.
- ZOOM does not accept responsibility for any damage caused by alteration of the unit.

**ZOOM**<sup>®</sup>  
CATCH US IF YOU CAN

ZOOM CORPORATION

NOAH Bldg., 2-10-2, Miyanishi-cho, Fuchu-shi, Tokyo 183-0022, Japan

PHONE: +81-42-369-7116 FAX: +81-42-369-7115

Web Site: <http://www.zoom.co.jp>