

H6 Firmware Update Guide

Copyright(C) 2021 ZOOM Corporation. All Rights Reserved.

● Zoom Corporation does not bear liability for any damages or third-party claims arising from the use of the software, whether directly or indirectly. Unauthorized redistribution, sale, leasing, renting, alteration, or reverse engineering of the software is prohibited. Features and specifications of the software and the contents of the documentation may be changed in future without notice.

Copying or reprinting this manual in part or in whole without permission is prohibited.

Windows® is a trademarks or registered trademarks of Microsoft®.

Macintosh®, Mac OS®, Mac® or OS X® is a trademarks or registered trademarks of Apple Inc.

Note: Other Product names, registered trademarks and company names in this document are the property of their respective companies.

Note: All trademarks and registered trademarks in this document are for identification purposes only and are not intended to infringe on the copyrights of their respective owners.

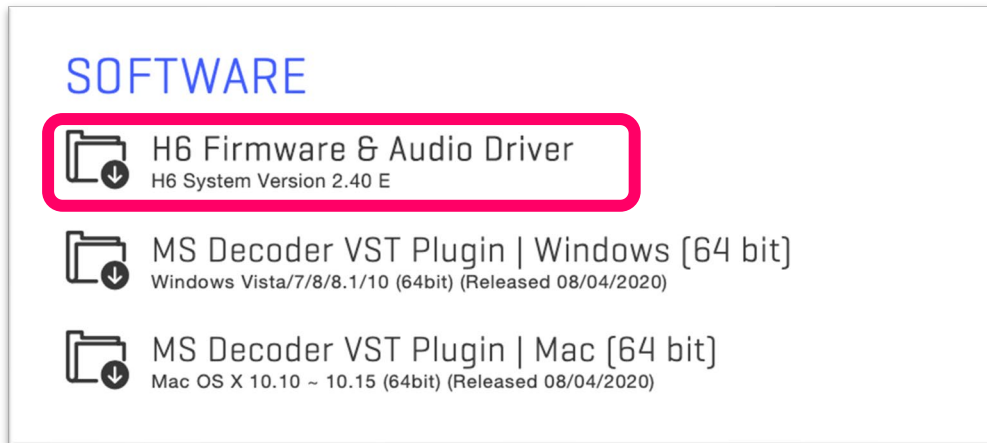
Note: Proper display is not possible on grayscale devices.

The illustrations in these instructions might differ from actual screens.

This guide explains firmware update to v2.40 as an example.

1. Installing the firmware update file

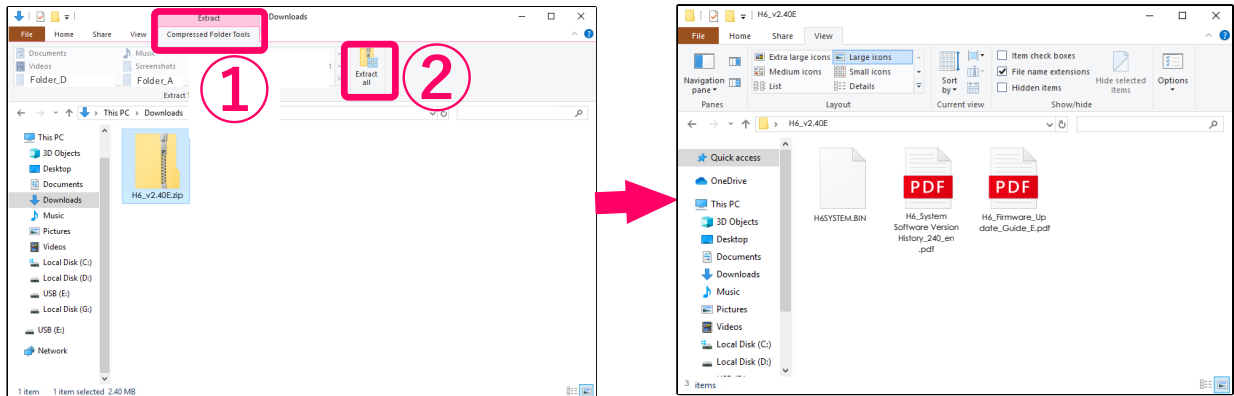
Download the ZIP file containing the firmware update file from H6 download page.



For Windows

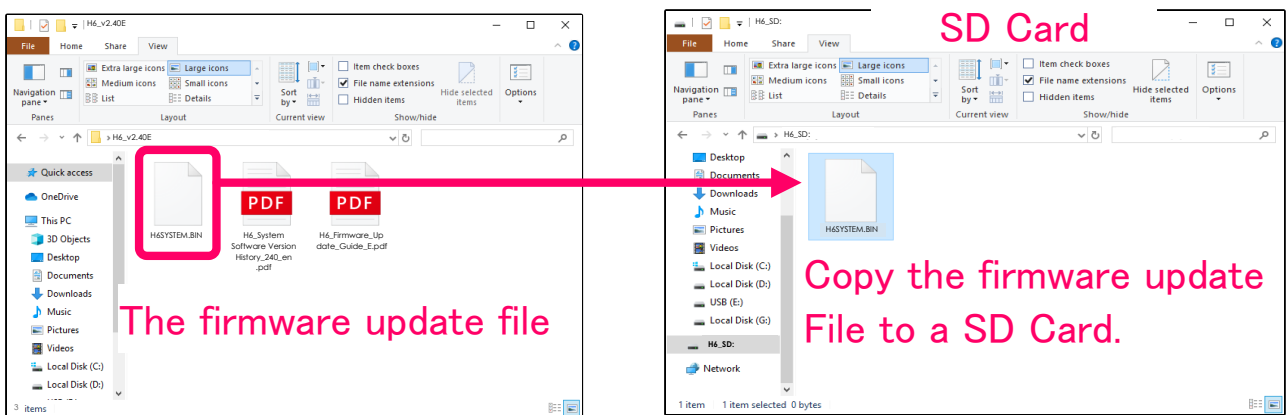
2. Extracting the ZIP file

Select the folder where you downloaded the ZIP file. ① Click "Compressed Folder Tools", then ② "Extract All". The ZIP file will be extracted.



3. Copying the firmware update file to a SD card

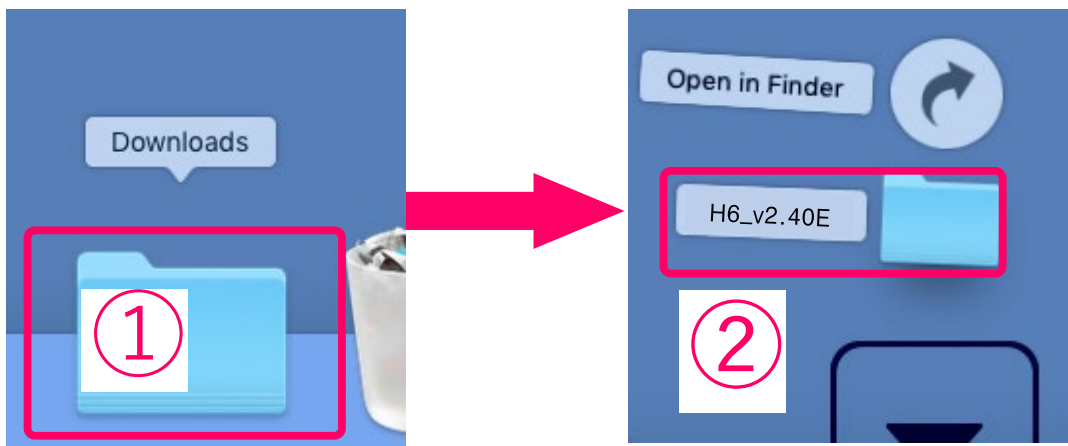
Copy the "H6SYSTEM.BIN" file to the root directory on a SD card.



For Mac

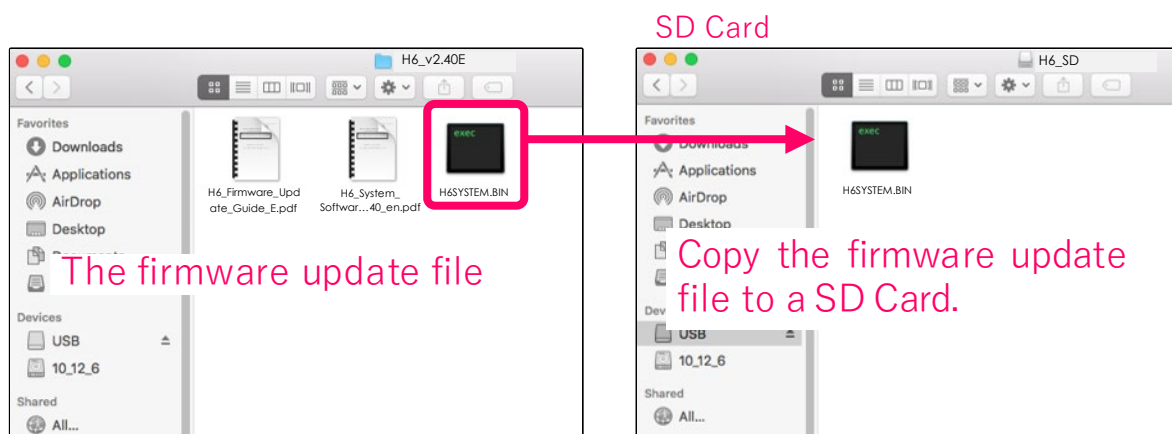
2. Opening the downloaded file

After downloading, click "Downloads" displayed at the bottom of the screen. Then click ② to open the downloaded file.



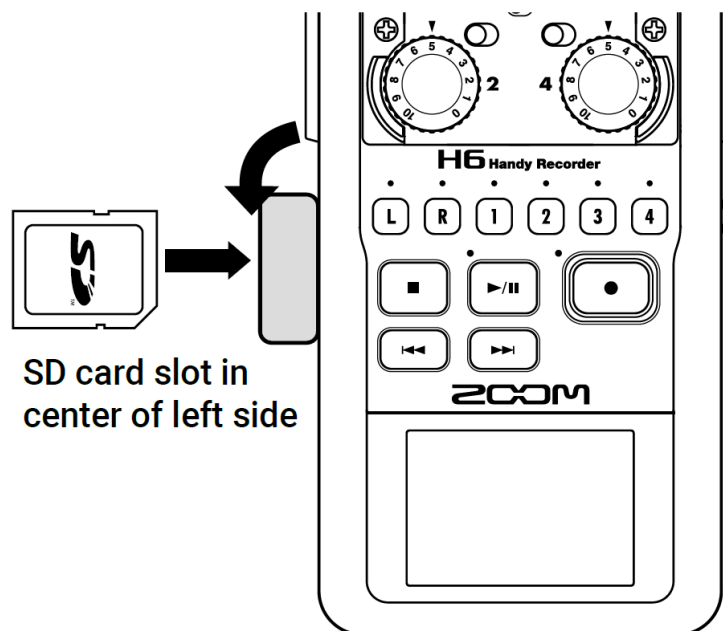
3. Copying the firmware update file to a SD card

Copy the "H6SYSTEM.BIN" file to the root directory on a SD card.



The following is the same procedure for Windows and Mac.

4. Insert the SD card into the H6.

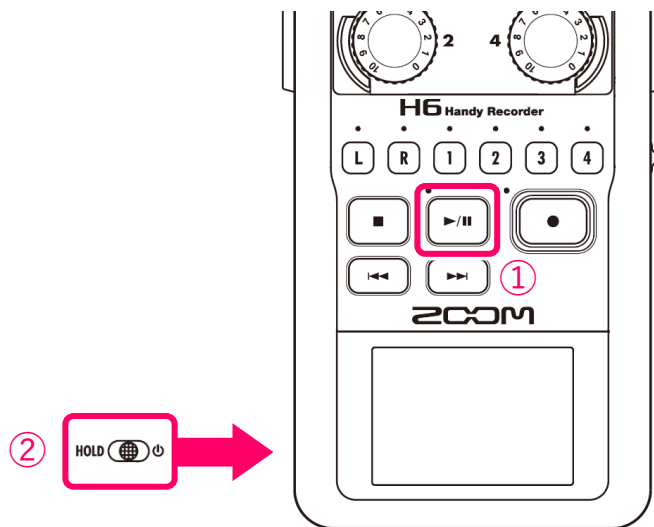



NOTE

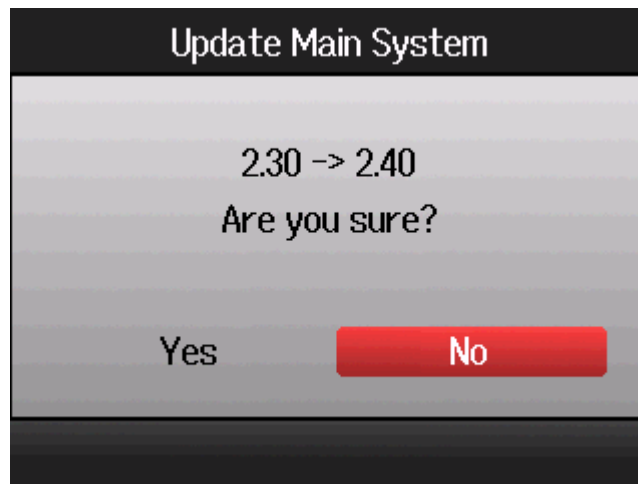
- Always make certain that the power is off when inserting or removing a SD card. Inserting or removing a card while the power is on could result in data loss.
- When inserting a SD card, be sure to insert the correct end with the top side up as shown.

5. Install new batteries in the H6 or connect an AC adapter.

6. While pressing  , turn the power on.



7. Use   to select Yes, and press  .



This starts the firmware update.

NOTE

- During the firmware update, do not turn the power off or remove the SD card. Doing so could cause the H6 to become unstartable.
- In the unlikely event that a firmware update should fail, conduct the procedures from the beginning to update the firmware again.

8. After the firmware update completes, turn the power off.

